

**UNITED STATES
PATENT AND TRADEMARK OFFICE**



Licensing Executives Society

Alice – One Year Later

Palo Alto, California
July 22, 2015

John Cabeca

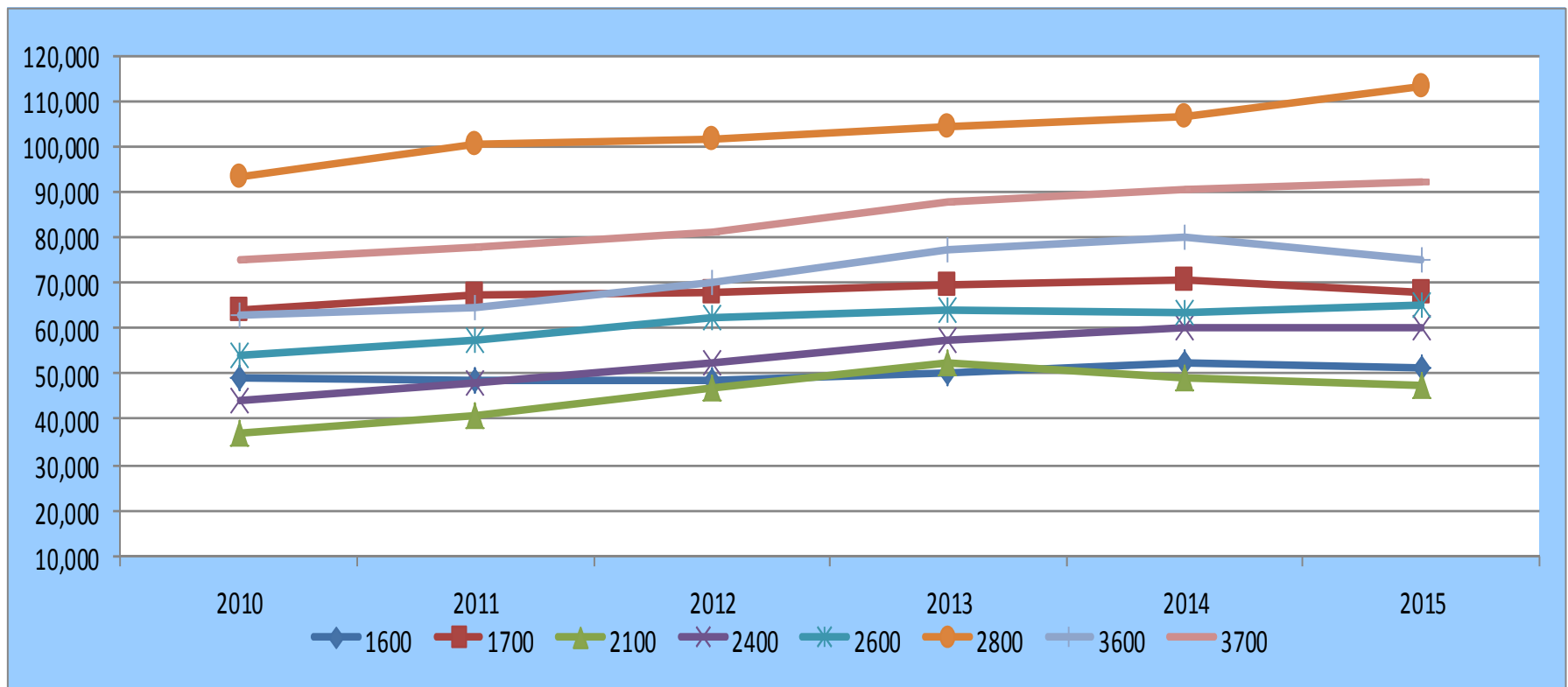
*Director of the Silicon Valley United States
Patent and Trademark Office*

UNITED STATES
PATENT AND TRADEMARK OFFICE

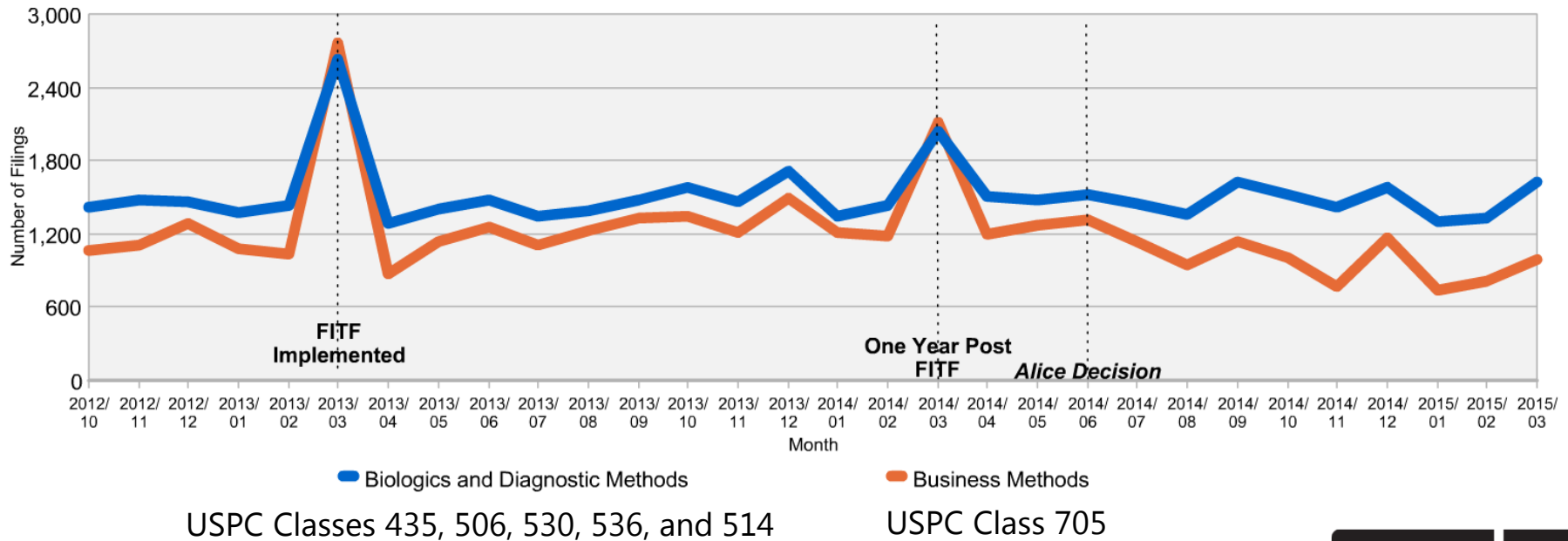


Total Filings by Technology Center

FY 2010 – FY 2015 (projected)

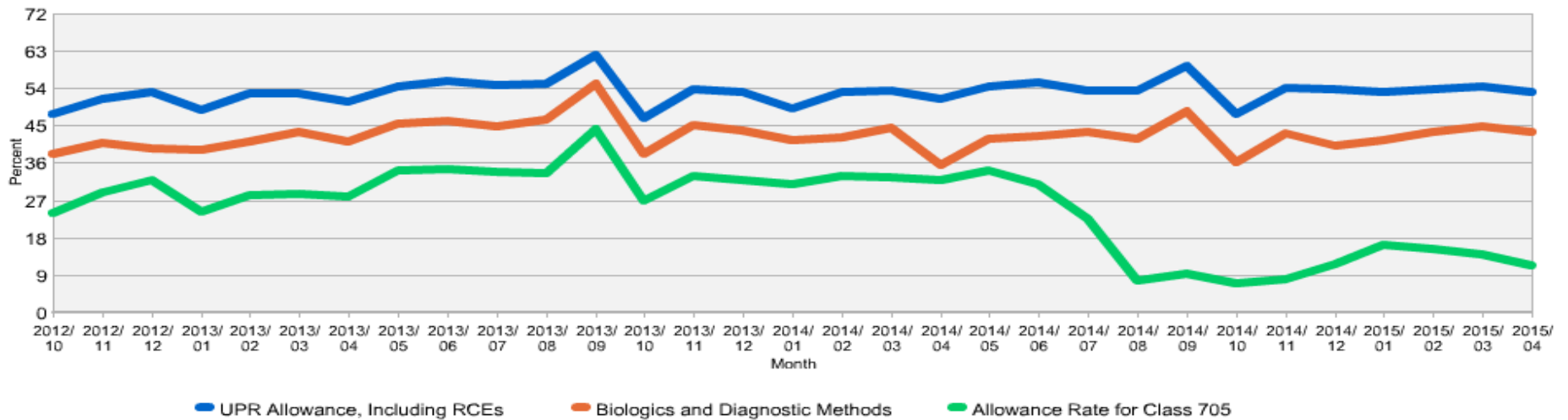


Monthly Filings in Biologics and Diagnostic Methods and Business Methods - Not Including RCEs



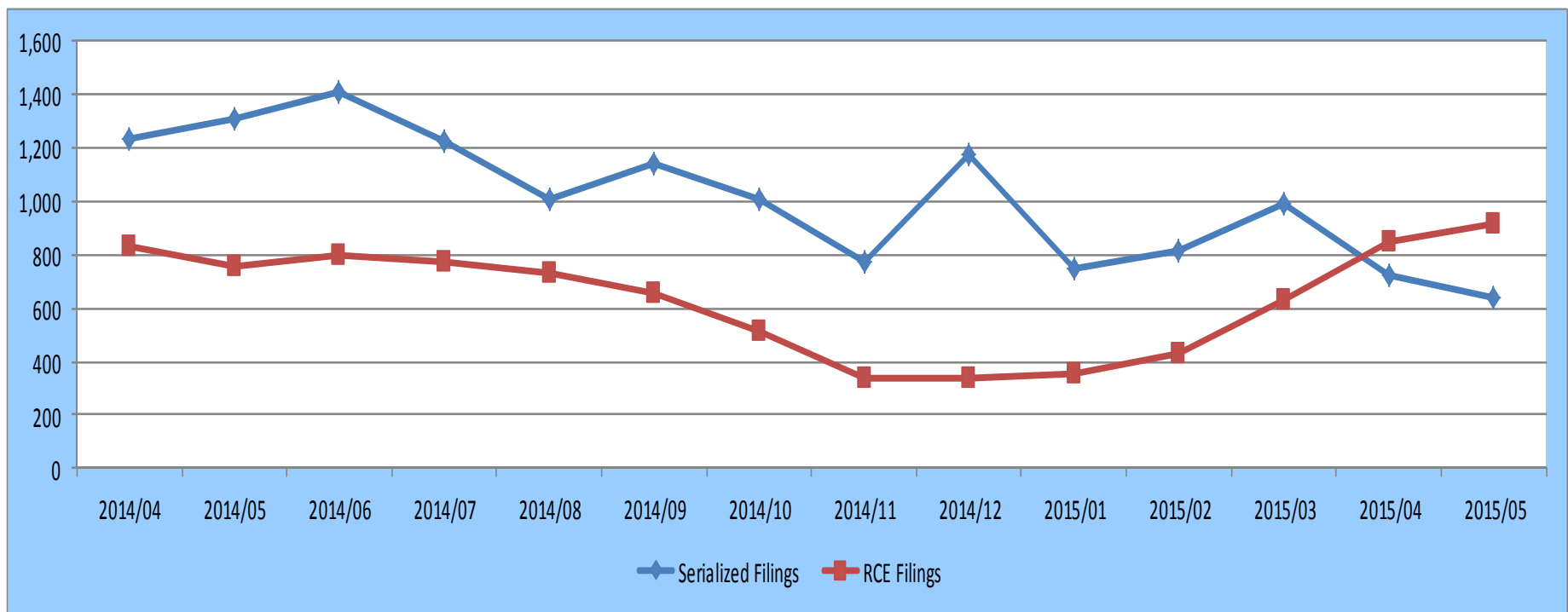
Monthly Allowance Rates

UPR, **Biologics**, and **Business Methods**



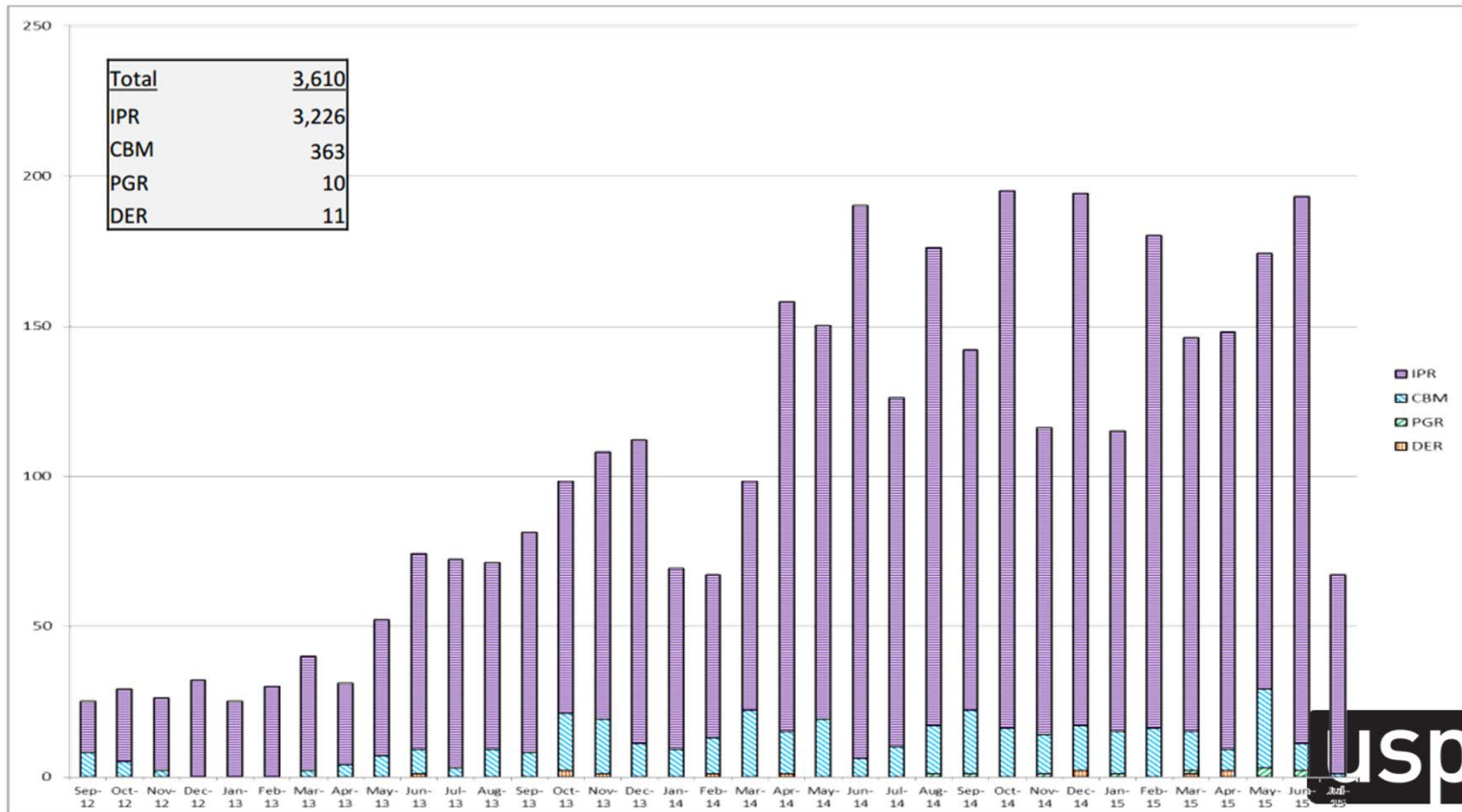
<http://www.uspto.gov/dashboards/patents/main.dashxml>

Monthly Serialized and RCE Filings Received in Class 705 (Business Methods) Between April 2014 and May 2015



AIA Progress (as of July 16, 2015)

- AIA Monthly Filings



AIA Progress (as of July 16, 2015)

- AIA Petition Dispositions

		Trials Instituted	Joinders	Percent Instituted	Denials	Total No. of Decisions on Institution
IPR	FY13	167	10+	87%	26	203
	FY14	557	15+	75%	193	765
	FY15	631	107+	70%	323	1,061
CBM	FY13	14	0	82%	3	17
	FY14	91	1+	75%	30	122
	FY15	73	2+	68%	35	110
PGR	FY15	2	-	100%	-	2
DER	FY14	0	0	0%	3	3



AIA Progress (as of July 16, 2015)

- AIA Final Dispositions

		Settlements	Adverse Judgments	Final Written Decisions
IPR	FY13	38	2	0
	FY14	210	39	130
	FY15	388	60	297
CBM	FY13	3	0	1
	FY14	27	3	13
	FY15	44	3	40
PGR	FY15	2	-	-



What helps make a claim patent eligible?

1. Use the disclosure to fully describe the inventive concept.
2. Recite the inventive concept in the claims.
3. Don't rely solely on routine and conventional limitations to provide eligibility.
4. Ensure that the claim complies with § 112, including definiteness, written description requirements and proper invocation of §112(f)
5. For claims reciting nature-based product limitations, distinguish the characteristics of the claimed product limitation from what exists in nature.
6. Interview with the examiner

